

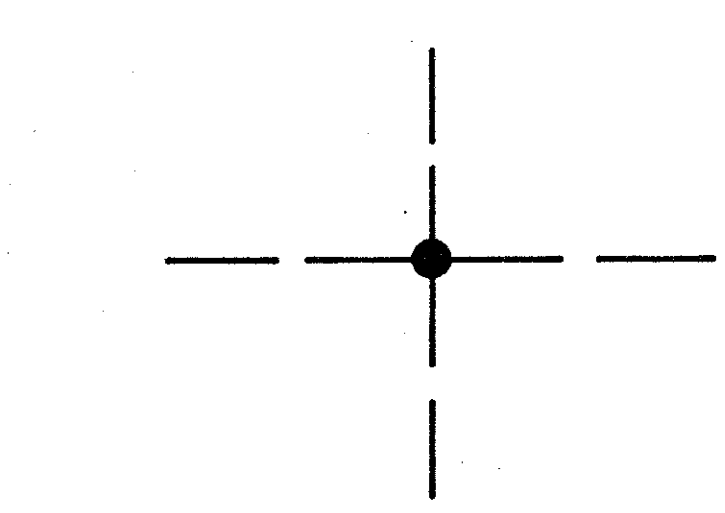
SCALE: 1"=300'

THIS IS NOT A RECORDED PLAT

SECTION 19, TOWNSHIP 42 SOUTH, RANGE 41 EAST, PALM BEACH COUNTY, FLORIDA, PREPARED FROM A BOUNDARY SURVEY BY GEORGE R. BROCKWAY, WEST PALM BEACH, FLORIDA, REGISTERED LAND SURVEYOR, FLORIDA CERTIFICATE NO. 831.

ALL TRACT DESCRIPTIONS ARE AS MEASURED PARALLEL TO THE SOUTH AND EAST SECTION LINES.

DEPicts TRACT LIMITS
DEPicts ROAD & DRAINAGE EASEMENTS
DEPicts POWER POLES AND ANCHORS



DEPicts SECTION CORNER

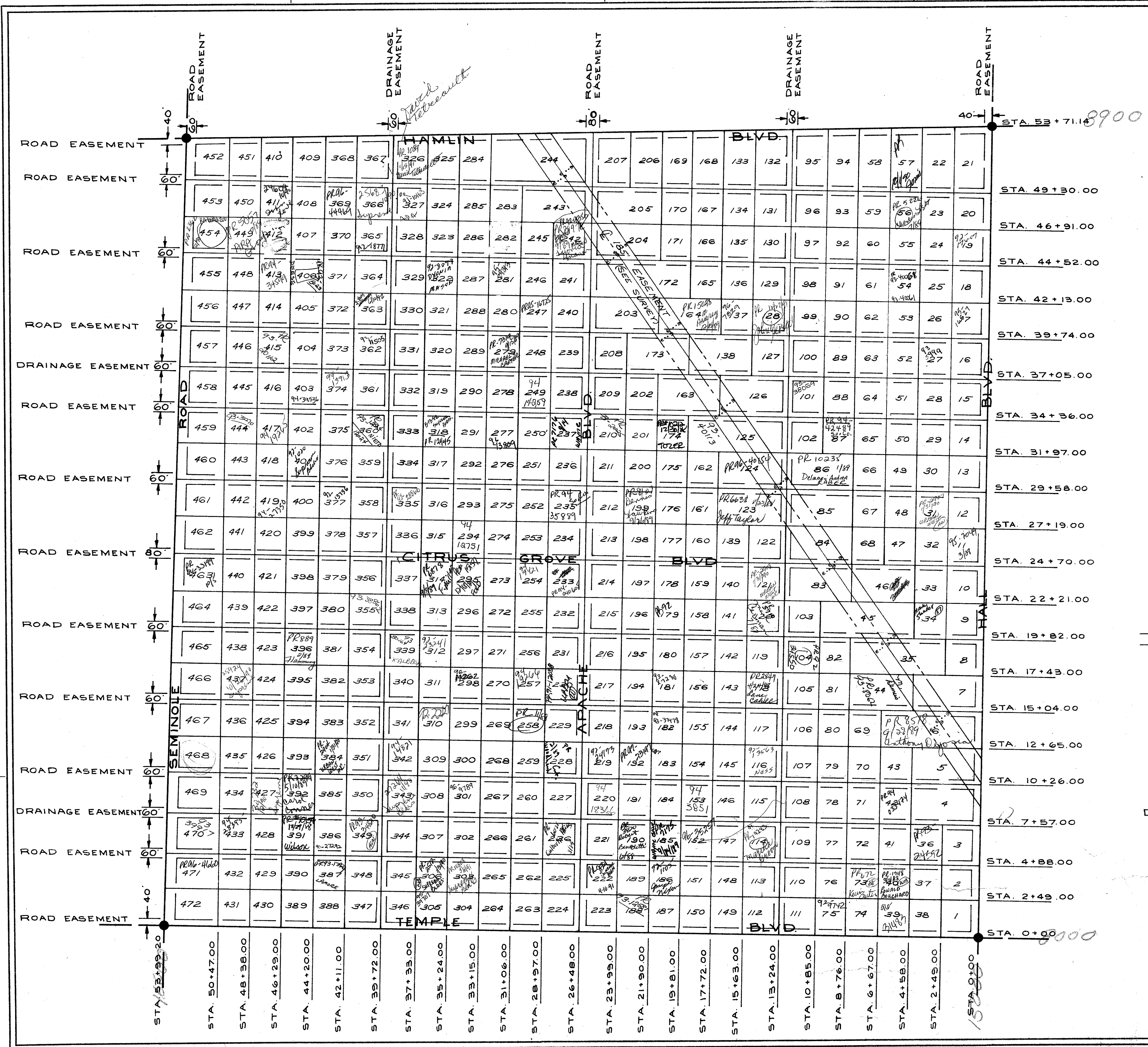
ur0367.igr
ROYAL PALM BEACH 41-42-19

SECTION 19, T. 42 S., R. 41 E., PALM BEACH COUNTY, FLORIDA

PLOT PLAN FOR ROYAL PALM BEACH COLONY, INC.

WOOD, BEARD, AND ASSOCIATES, INC. CONSULTING ENGINEERS FORT PIERCE, FLORIDA

DESIGNED BY ALA CHECKED BY A.W. DWG. NO. 3075
SCALE 1"=300 DATE 4-70 SHEET 1 OF 13



SEMINOLE ROAD

BLVD

BLVD